



# MABALACAT CITY COLLEGE

FROM THE MINUTES OF THE 1st SPECIAL MEETING OF THE BOARD OF TRUSTEES OF MABALACAT CITY COLLEGE HELD ON MARCH 02, 2021, 2:00 P.M. VIA MICROSOFT TEAMS (VIRTUAL)

**PRESENT:**

*Vice Chairperson* - Dr. Michelle A. Ong      College President

**Members -**

Dr. Imelda DP. Soriano	Representative, ALCU-National
Ms. Rebecca Q. Lising	President, MCC Faculty Association
Mr. Niel P. Rigdao	President, MCC Alumni Association
Mr. John Khyle David B. Villanueva	President, MCC Student Council

**Secretary of the Meeting -**

Atty. Charmaine P. Lansangan-Venturina

**ABSENT:**

<i>Handwritten signature</i> <i>Chairperson</i> - Hon. Crisostomo C. Garbo	Mayor, Mabalacat City, Pampanga
Hon. Krizzanel C. Garbo	Chairperson, Committee on Education, Sangguniang Panlungsod, Mabalacat City, Pampanga

X-----X

**RESOLUTION NO. 07**  
Series of 2021

**APPROVING THE GARBAGE DISPOSAL POLICY OF MABALACAT CITY COLLEGE**

WHEREAS, Article III Section 6 of the City Ordinance No. 60 s. 2016 generally known as **The New Charter of Mabalacat City College**, the *Sangguniang Panlungsod* empowers Mabalacat City College to exercise the general powers prescribed by this Ordinance in order to carry out and perform the powers and functions are hereby vested exclusively by the Board of Trustees;

Start Here,  
Be Successful **Anywhere!**

www.mcc.edu.ph  
(045) 209 8720



0 : JUN 2021

000009



# MABALACAT CITY COLLEGE

**WHEREAS**, Article II section 7 (o), of the City Ordinance No. 60 s. 2016 generally known as The New Charter of Mabalacat City College, the Sangguniang Panlungsod of Mabalacat City empowers the Board of Trustees to prescribe implementing rules and regulation for the administration and management of the College;

**WHEREAS**, Republic Act No. 9003, otherwise known as the ecological solid waste management act of 2000, provides that the policy of the state is to adopt a systematic comprehensive and ecological and solid waste management program which shall ensure the proper segregation, collection, transport, storage, treatment and disposal of garbage and adoption of the best environment practices in Solid Waste Management;

**WHEREAS**, Mabalacat City College recognizes the need to have a Garbage Disposal Policy, providing therein the Systematic Solid Waste Management process.

**NOW THEREFORE, BE IT RESOLVED**, as it is hereby **RESOLVED**, by the Board of Trustees in its 1st Special Meeting herein assemble to approve the following:

## Garbage Disposal Policy of Mabalacat City College

This paper discusses the recommendations on the processes and practices to be implemented for the garbage disposal system of Mabalacat City College.

### I. Type of wastes generated in universities

Before discussing the recommendations on garbage disposal processes and practices that shall be implemented in MCC, the types of waste generally produced in universities shall be discussed first.

The types of waste mostly produced in academic institutions are paper, cardboard, plastics, wood, food wastes, glass, metals, special wastes (e.g., bulky items, consumer electronics, white goods, batteries, oil, tires), and hazardous wastes.<sup>1</sup> Generally, these may be divided into biodegradable and non-biodegradable waste.

However, for the purposes of promoting proper segregation and recycling of waste in the College, wastes shall be grouped into organic waste, recyclable waste and non-recyclable waste. Also, toxic waste shall be included in the categories since MCC has clinics, simulation rooms and laboratories. Said category shall include hazardous and special waste defined above and shall be further discussed in item iv.

<sup>1</sup><https://www.imedpub.com/articles/solid-waste-characterization-and-recycling-potential-for-university-campuses-in-ghana-case-study-of-two-ghanaian-universities.php?aid=22409>



# MABALACAT CITY COLLEGE

i. Organic Waste

Organic or biodegradable waste shall refer to rotten meat, garden and food waste. This type of waste decomposes over time and turn into fertilizer.<sup>2</sup>

ii. Recyclable waste

Recyclable waste includes all waste that have economic value that may be recover and reused after disposal.<sup>3</sup> This shall include paper, cardboard, plastic, glass, metal, old cloth that may be recycled. This type of waste may be further recycled by the institution or may be sold in junk shops.

iii. Non-recyclable waste

Non-recyclable wastes are waste that do not have economic value once disposed<sup>4</sup>. This may include packaging materials, soiled paper, towels, Styrofoam, plastic bags, etc.

iv. Hazardous Waste

Toxic or hazardous waste in schools poses a health risk to employees and students alike.<sup>5</sup> Although schools produce only a fraction of this type of waste, it shall be part of the waste disposal system of the school. With this, MCC shall also further categorize waste bins designated in areas where toxic waste may be located:

- a. Clinics
- b. Laboratories – CHEM Lab, BIO Lab and Lab Storage
- c. IHTM Simulation Rooms

<sup>2</sup> <https://www.dtmships.co.uk/blog/types-of-waste/>

<sup>3</sup> [https://www.researchgate.net/publication/301283637\\_NON-BIODEGRADABLE\\_WASTE\\_-\\_ITS\\_IMPACT\\_SAFE\\_DISPOSAL#:~:text=Plastic%2C%20paper%2C%20old%20cloth%20etc,variety%20of%20waste%20being%20accumulated.](https://www.researchgate.net/publication/301283637_NON-BIODEGRADABLE_WASTE_-_ITS_IMPACT_SAFE_DISPOSAL#:~:text=Plastic%2C%20paper%2C%20old%20cloth%20etc,variety%20of%20waste%20being%20accumulated.)

<sup>4</sup> [https://www.researchgate.net/publication/301283637\\_NON-BIODEGRADABLE\\_WASTE\\_-\\_ITS\\_IMPACT\\_SAFE\\_DISPOSAL#:~:text=Plastic%2C%20paper%2C%20old%20cloth%20etc,variety%20of%20waste%20being%20accumulated.](https://www.researchgate.net/publication/301283637_NON-BIODEGRADABLE_WASTE_-_ITS_IMPACT_SAFE_DISPOSAL#:~:text=Plastic%2C%20paper%2C%20old%20cloth%20etc,variety%20of%20waste%20being%20accumulated.)

<sup>5</sup> <https://northwestwaste.co.uk/hazardous-waste-in-schools/>



## MABALACAT CITY COLLEGE

### d. Comfort rooms

For the purposes of implementing the segregation of toxic waste in MCC, waste from each source should only be disposed in the waste bin designated in that area. This shall minimize the risk of combustion or harmful chemical reaction that may result in mixing these substances. Medical waste should only be disposed in clinics, chemical wastes in laboratories, etc.

### v. Electronic waste

Electronic waste or more commonly known as “e-waste” are any electronic products nearing the end of their useful life<sup>6</sup>. This category shall include cables, wires, chargers, or any other electronics for disposal.

## II. Recommendation on Waste Bins

### i. Color-coding

To avoid confusion on proper garbage disposal in the College, it is suggested that the color-coding of garbage bins be consistent in MCC Dapdap and MCC Dolores. This entails procuring garbage bins of different color per garbage type.

According to an article posted in IIT Mandi on Solid Waste Management<sup>7</sup>. Their segregation of waste according to color is as follows:

- a. Green- this shall be designated for wet and biodegradable wastes. This shall be used to dispose food waste and other organic matters (e.g., food waste, leaves, leftovers)
- b. Blue – this bin shall be used to dispose waste that may no longer be recycled (e.g., used paper towels, wax paper, plastic bags, packaging materials from soiled food, styrofoam)
- c. Yellow – this shall be designated for recyclable waste (e.g., plastic bottles, containers and empty cans)
- d. Red <sup>8</sup>- for hazardous waste, a red bin may be assigned as they do not belong in any of the abovementioned categories. This shall include medical and

<sup>6</sup> <https://www.calrecycle.ca.gov/electronics/whatiswaste>

<sup>7</sup> [https://www.iitmandi.ac.in/institute/Green\\_Panel/solid\\_waste\\_2016.php](https://www.iitmandi.ac.in/institute/Green_Panel/solid_waste_2016.php)

<sup>8</sup> <https://bengaluru.citizenmatters.in/4639-segregating-waste-is-the-key-4639>



## MABALACAT CITY COLLEGE

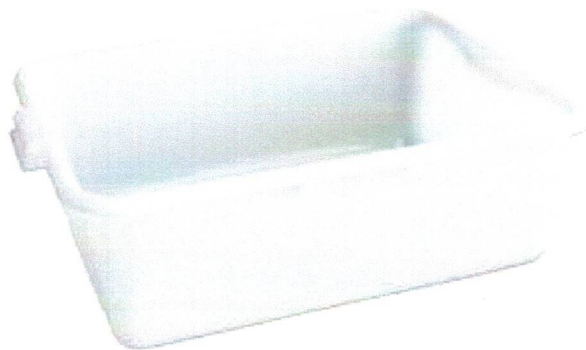
chemical waste from clinics and science laboratories, used cooking oil and disposing of sharp objects in IHTM simulation rooms, and sanitary waste in comfort rooms.

- e. Black – this shall be designated for disposal of electronics such as chargers, cables, wires and other electronic waste. Each floor of both campuses shall have a designated waste bin for e-waste.
  - f. White – this shall be used for disposal of papers. It is suggested that disposed papers should not be crumpled or soiled. For the same reason, containers are recommended to be rectangular, not round.
- ii. Label and Visuals

It is also recommended that waste bins contain label and visuals for students to easily identify the designation of each waste bin. Samples of these are as follows:



*Handwritten signatures and initials:*  
 M.A. Joseph  
 B. Domingo  
 [Signature]



Start Here,  
Be Successful **A**



# MABALACAT CITY COLLEGE

For papers only

### III. Recommendation on the Location of Bins

In placing waste bins in the school premises, the following should be considered:

- i. Waste should not be stored in plant or electrical switch rooms, near to heat or ignition sources, or hinder access to equipment<sup>9</sup>.
- ii. Waste bins should not be placed near parking lots<sup>10</sup>. The distance of waste bins from each other should at least be 3 feet. Also, bins should be 10 feet away from obstacles (e.g. lamps, posts, cars, power lines)<sup>11</sup>.

*Handwritten signatures and initials:*  
 Ate  
 Joseph  
 [Signature]

<sup>9</sup> [https://www.ed.ac.uk/files/atoms/files/waste\\_strategy.pdf](https://www.ed.ac.uk/files/atoms/files/waste_strategy.pdf)

<sup>10</sup> <https://www.metrobinhire.com.au/blog/bin-placement-guide>

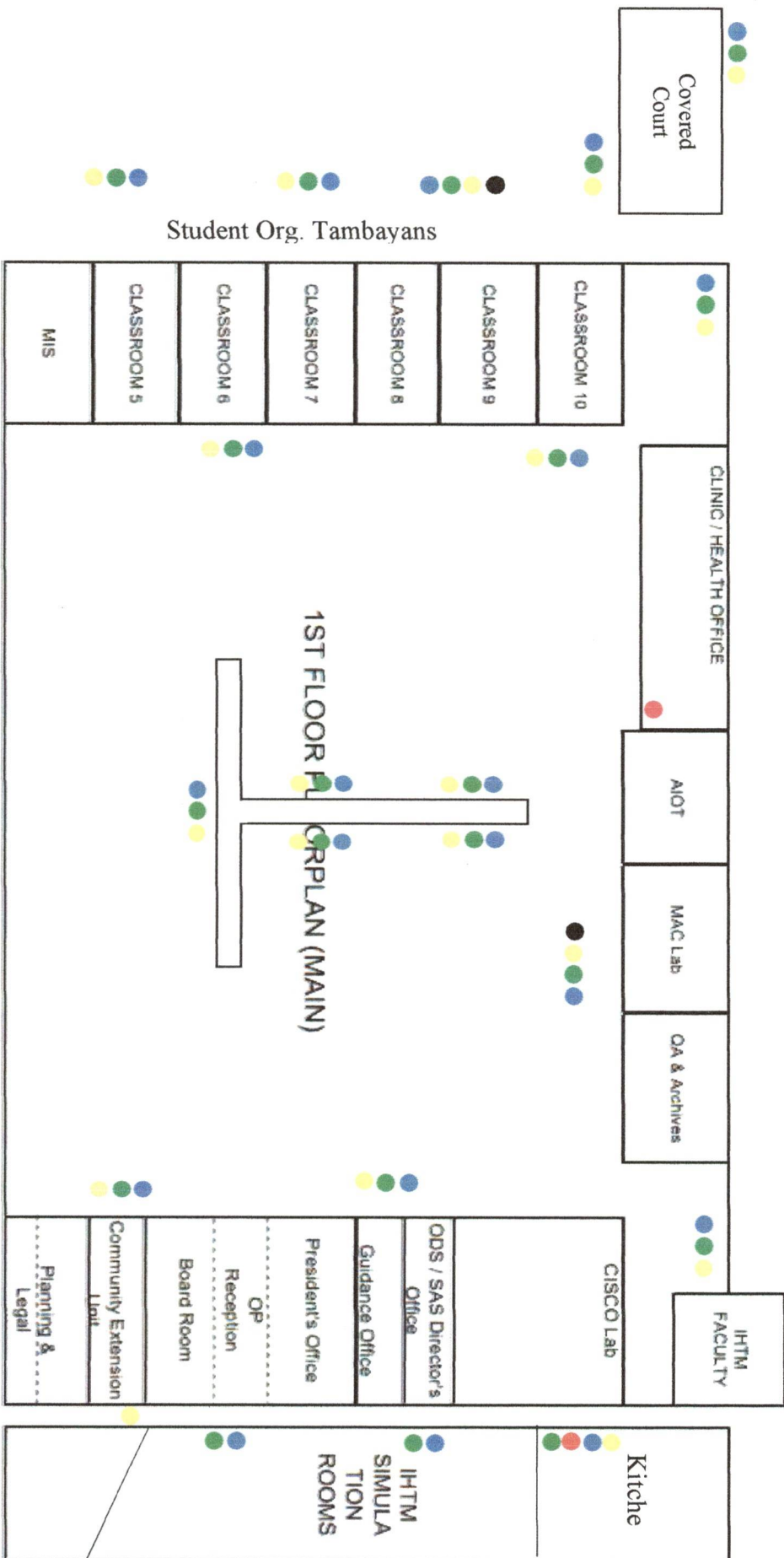
<sup>11</sup>

<https://wasteindustries.com/residential/curbsideplacement#:~:text=Keep%20your%20garbage%20cans%20three,lamp%20posts%2C%20or%20power%20lines.0>



# MABALACAT CITY COLLEGE

Proposed Location of Waste Bins at MCC Dolores



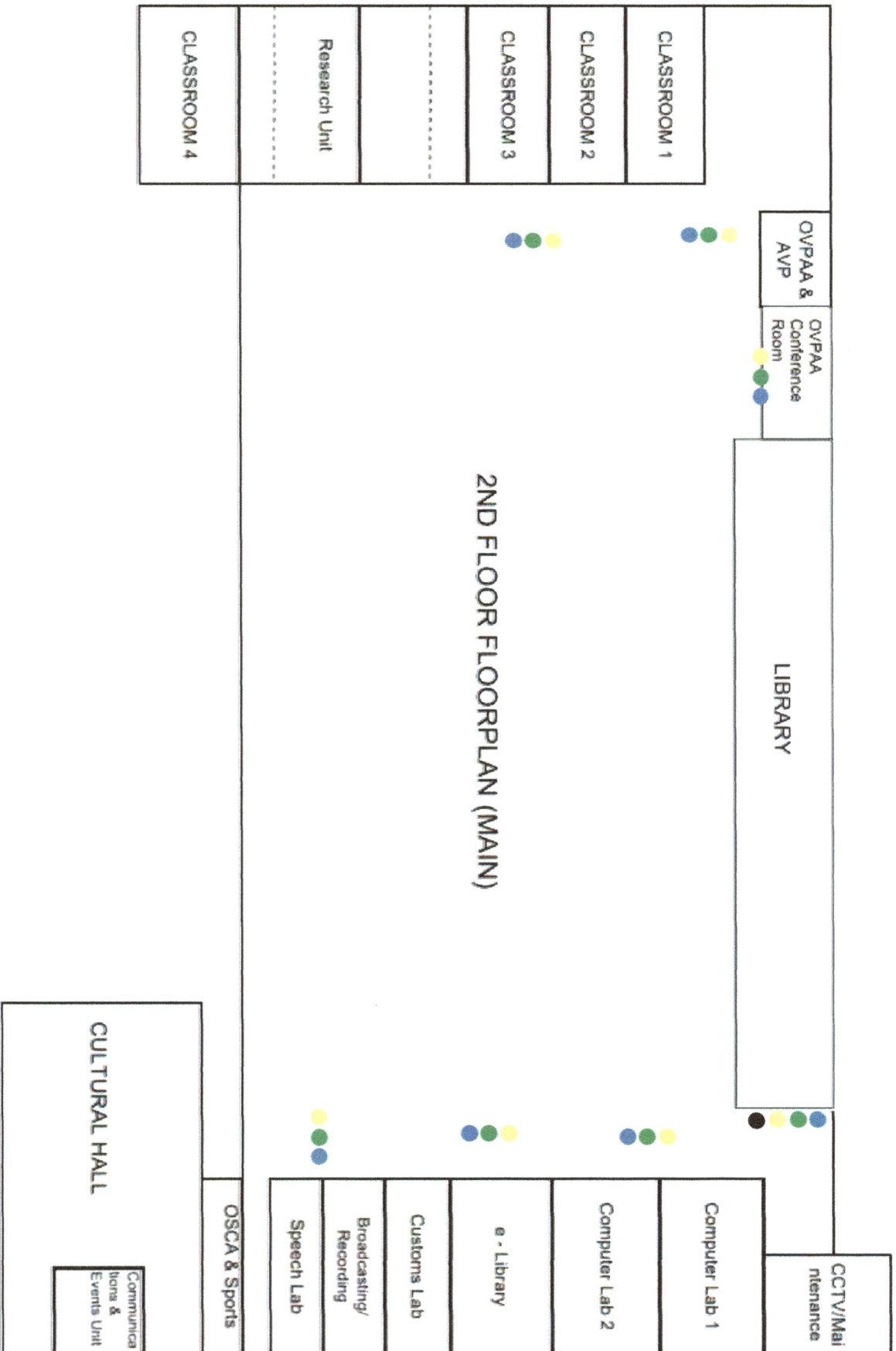
- Legends:
- -organic waste
  - -non-recyclable waste
  - -recyclable waste
  - -hazardous waste
  - - e-waste

Note:

- All comfort rooms are recommended to have red waste bins for sanitary waste.
- All classrooms and offices are suggested to have white rectangular bins.

Entrance of the

It is recommended that all floors of the new building have three (3) sets of blue, green and yellow bins.



**Legends:**

- -organic waste
- -non-recyclable waste
- -recyclable waste
- -hazardous waste
- - e-waste

**Note:**

- All comfort rooms are recommended to have red waste bins for sanitary waste.
- All classrooms and offices are suggested to have white rectangular bins.

*[Signature]*

*[Signature]*  
*[Signature]*

*[Signature]*  
*[Signature]*



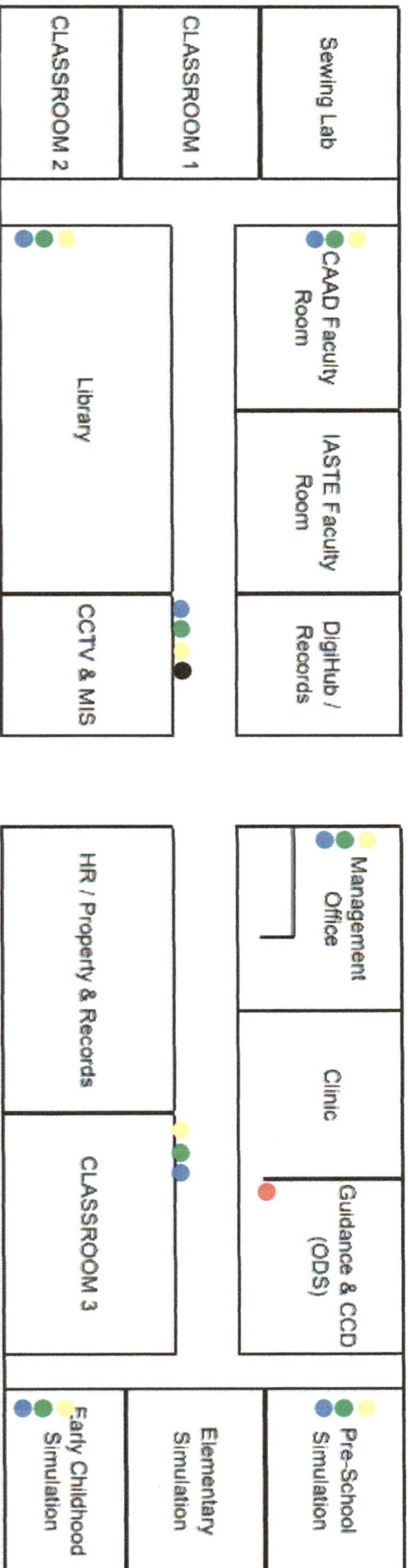


# MABALACAT CITY COLLEGE

Proposed Location of Waste Bins at MCC Dapdap

## DAPDAP FLOORPLAN

### 1st FLOOR



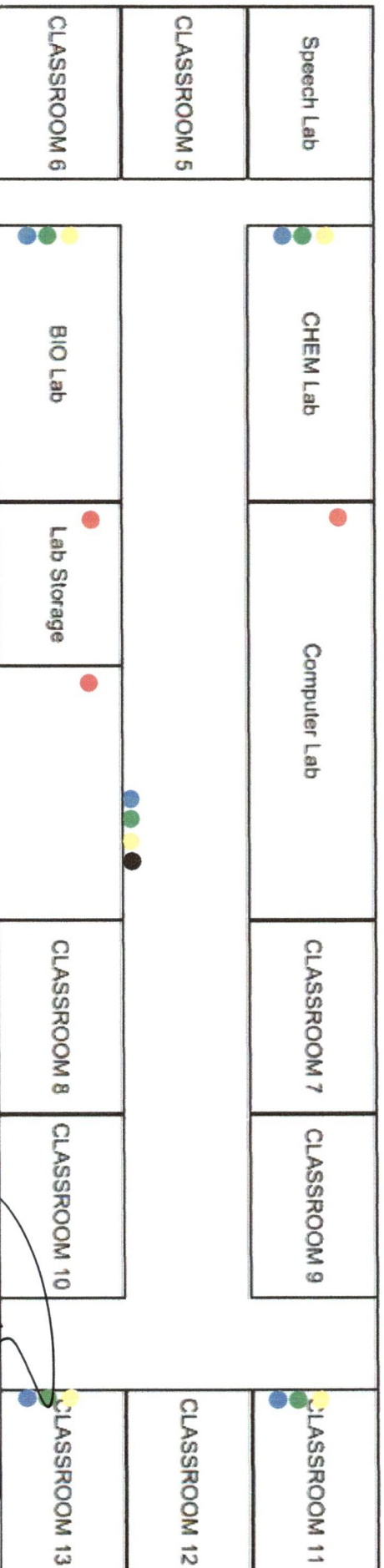
**Legends:**

- -organic waste
- -non-recyclable waste
- -recyclable waste
- -hazardous waste
- - e-waste

**Note:**

- All comfort rooms are recommended to have red waste bins for sanitary waste.
- All classrooms and offices are suggested to have white rectangular bins.

### 2nd FLOOR





## MABALACAT CITY COLLEGE

### V. Recommendation on Waste Management Contract

Milne, H. (2018) suggested in the study entitled Edge Hill University Waste Strategy Development<sup>12</sup>, several approaches in obtaining waste disposal contractors, including the following:

#### a. "One-stop-shop" Approach

With this approach, a single contracted shall be appointed in collecting waste generated by the College.

#### b. "mix-and-match" approach

With this arrangement, several contractors may be assigned to collect different types of wastes. For example, one contract will be for mixed dry recyclables, another for hazardous waste, etc.

### VI. Recommendation on the Collection of Waste

#### i. Person/Unit in charge

According to a study by Hamish Milne, Graduate Environmental Scientist, on the waste management of Edge Hill University, the Facilities Management Department manages the waste and recycling services in the campus.<sup>13</sup> The same is also recommended to be implemented in MCC since these personnel are already knowledgeable of the practices and proper procedures in waste disposal.

#### ii. Proper PPE

As per Article 3, Section 23 of R.A. 9003, (a) all collectors and other personnel dealing with collection of solid waste shall be equipped with personal protective equipment to protect them from hazards of handling waste.<sup>14</sup> According to a document posted by Healthcare without harm, specifications of basic PPE in collecting wastes from labs: gloves, boots, apron.<sup>15</sup>

<sup>12</sup> <https://www.edgehill.ac.uk/sustainability/files/2018/10/Waste-Management-Strategy.pdf>

<sup>13</sup> <https://www.edgehill.ac.uk/sustainability/files/2018/10/Waste-Management-Strategy.pdf>

<sup>14</sup> [https://www.lawphil.net/statutes/repacts/ra2001/ra\\_9003\\_2001.html](https://www.lawphil.net/statutes/repacts/ra2001/ra_9003_2001.html)

<sup>15</sup> <https://noharm-global.org/documents/health-care-waste-management-worker-ppe-guidance>



# MABALACAT CITY COLLEGE

## VII. Recommendation on Information Dissemination

To effectively implement policies on proper waste management, it is important that awareness among employees and students shall be established. Dissemination of information may be done inside the campus by conducting seminars or distributing office memoranda, and with the use of social media by posting infographics and other materials.

In fact, TESDA released an online course entitled “Performing Solid Waste Management in the Workplace<sup>16</sup>” for public use. The MCC community may access this course through the TESDA Online Program (TOP) website (<https://www.e-tesda.gov.ph/course/index.php?categoryid=57>). In addition to the College’s policies on proper waste management, students and employees may refer to courses such as this in order to enhance their knowledge on waste management.

## VIII. Recognitions and Programs

### i. Zero waste month

January is known as Zero Waste Month, as mandated by Presidential Proclamation No. 760<sup>17</sup>. In celebration of this event, the MCC community may conduct different programs and activities for the whole month.

Some suggested activities are as follows:

- Art Festival – the MCC community may create art, in any form, using only recycled materials.
- Tote-your-trash <sup>18</sup> day – students and employees must carry their own trash bag with them for a day.

### ii. World Habitat Day

<sup>16</sup> <https://www.e-tesda.gov.ph/course/index.php?categoryid=57>

<sup>17</sup> <http://car.emb.gov.ph/january-is-zero-waste-month/>

<sup>18</sup> [https://nmssanctuaries.blob.core.windows.net/sanctuaries-prod/media/archive/education/ocean\\_guardian/zero-waste-week/school-activities.pdf](https://nmssanctuaries.blob.core.windows.net/sanctuaries-prod/media/archive/education/ocean_guardian/zero-waste-week/school-activities.pdf)



## MABALACAT CITY COLLEGE

The United Nations designated the first Monday of October of every year as World Habitat Day to reflect on the state of our towns and cities, and on the basic right of all to adequate shelter. The Day is also intended to remind the world that we all have the power and the responsibility to shape the future of our cities and towns

For this year, the MCC community shall observe and celebrate World Habitat Day on October 1, 2021.

iii. Global Garbage Man Day

Every June 17th, the MCC community shall take time to recognize and celebrate the people who keep the College's environment safe and clean. In observance of the Global Garbage Man Day, MCC shall celebrate Sanitation Workers Appreciation Day.

On this day, the MCC community shall express their appreciation to its Facilities personnel through programs and activities. One of the suggested activities is "pass the hat", wherein the MCC community gathers and prepares gifts for the Facilities personnel as tokens of appreciation.

**RESOLVED FURTHER,** That a copy of this resolution be furnished to the concerned offices.

**APPROVED** this 02 day of March 2021.

Approved by:

**HON. CRISOSTOMO C. GARBO**  
Chairperson, Mayor of the LGU of Mabalacat City

**DR. MICHELLE A. ONG**  
Vice Chairperson, College President

*[Handwritten signatures and initials on the left margin]*



Republic of the Philippines  
Province of Pampanga  
Mabalacat City



## MABALACAT CITY COLLEGE

**HON. KRIZZANEL C. GARBO**  
Member, Chairperson - Committee on Education  
Sangguniang Panlungsod of the LGU of  
Mabalacat City

**DR. IMELDA DP. SORIANO**  
Representative, ALCU - National

**MS. REBECCA Q. LISING**  
Member, President - MCC Faculty Association

**MR. NIEL P. RIGDAO**  
Member, President - MCC Alumni Association

**MR. JOHN KHYLE DAVID B. VILLANUEVA**  
Member, President - MCC Student Council

RESOLUTION NO. 07  
Series of 2021

APPROVING THE GARBAGE DISPOSAL  
POLICY OF MABALACAT CITY COLLEGE

Start Here,  
Be Successful *Anywhere!*

[www.mcc.edu.ph](http://www.mcc.edu.ph)  
(045) 209 8720

13